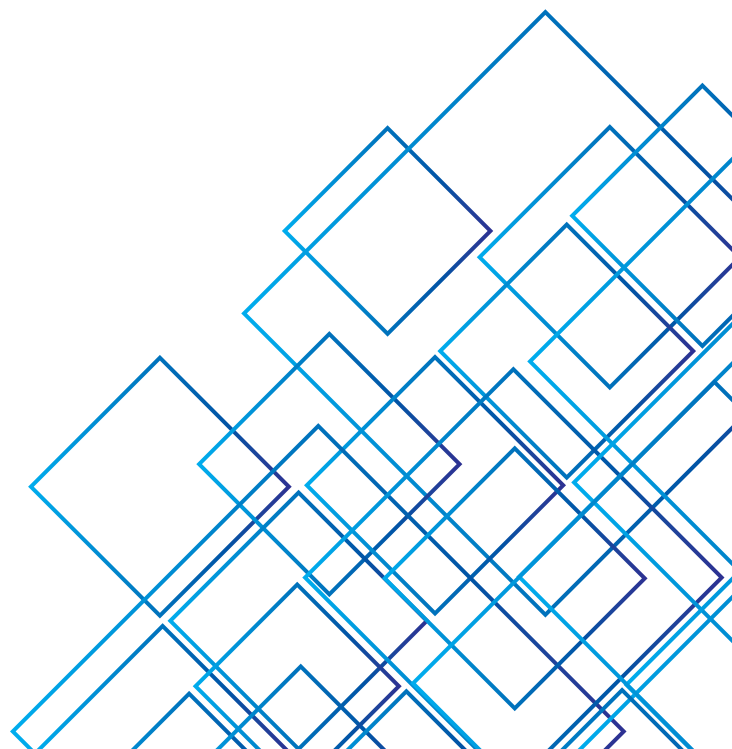


JIOLAT

Group

ISO 9001:2015 Company



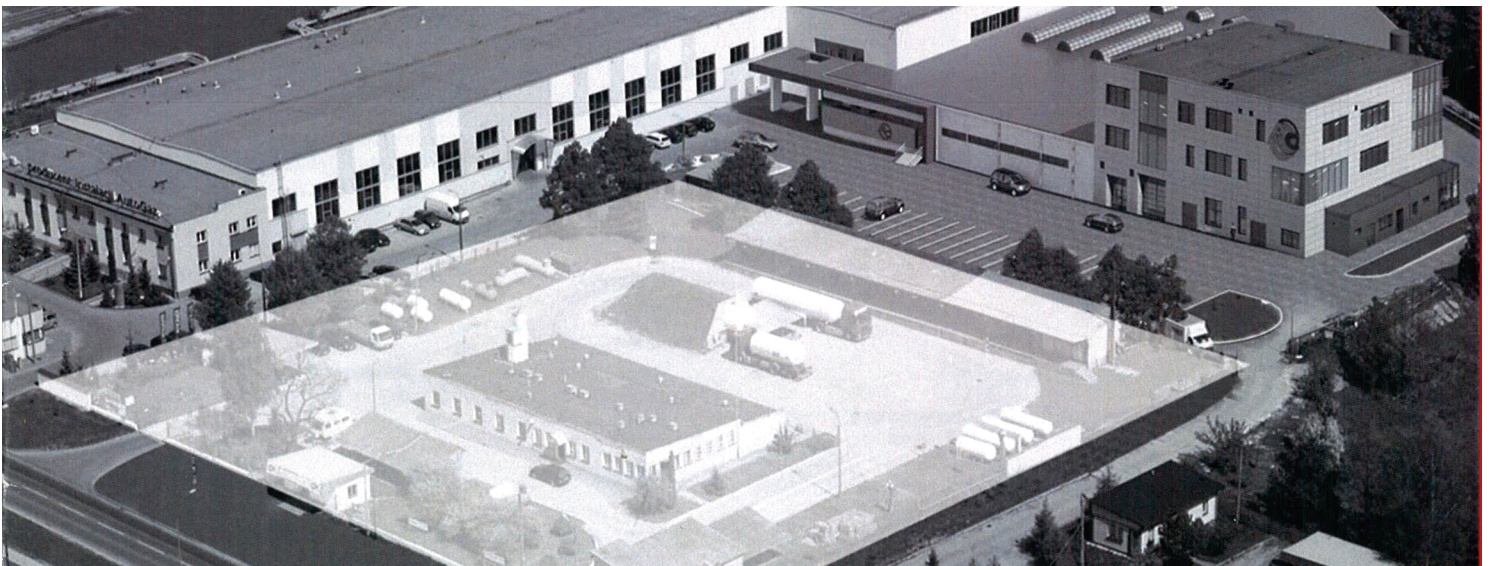


COMPANY PROFILE

- Jiolat Group having presence in automotive industry since 1996 & Begning from 1999 for CNG parts & fuel system supplier across the india today, we are on of the company who have converted more than 35000 LMV (Petrol to CNG duel fuel mode) & 17000 HCV and LCV (Diesel to CNG mono-fuel mode). Jiolat Fuel Tech Pvt. Ltd. are part of Jiolat Group re-presenting in LMV CNG conversion along with LNG/CNG station set-up, storage facility and transpotation, also
- Our innovative approach has helped shape the modernization of CNG systems for LMV & HCV vehicles & supports to environment safety and economy of nation.
- We are having tendering works like: CNG Cylinder cascade re-test, CNG pipeline project, cylinder re-test facility approved by PESO, Nagpur for periodical testing work (for all kind of CNG Cylinders on board & CNG cascade). we democratize innovative technology and drive forward excellent ideas to their production maturity. the engineers at our facilities are consistently translating revolutionary concepts

VISION OF JIOLAT GROUP

- The company's mission is to establish it as a brand name in the field of CNG kit installation & distribution network across the india
- All base models & variants approved by ICAT, ARAI & CIRT
- to provide maximum value to our customers by providing alternate fuel, clean energy and automotive products along with great service that is perceivably different in technology, quality and innovation.
- Start the well organize Retro-fitment centre for OEM and zero kilometer vehicle fitment Now we are having big workshop area of more than 4000 sq. meter. at Gurgaon for CNG Conversion Haryana (For taking care of major taxi operator group)



Secure gas supply & develop LNG Project and market Progress evaluation of other LNG project opportunities

Business Model...What Attracted JIOLAT GROUP PVT. LTD. CNG / LNG cylinders manufacturing technology and Strategic focus in developing CNG/ LNG projects:

Technical highlights of **JIOLAT GROUP PVT. LTD.** Approach Benefits for CNG / LNG Project Development Simple and efficient process Using proven technology Low equipment count, Higher efficiency and less emissions by 20-40% Lower project cost by 30-50%, Higher availability, Easier installation, operations & maintenance Fast shut down and start up Faster construction schedule Smaller land area requirement Smaller risk contours Increases ability to strategically locate LNG projects Potential to site closer to gas supply Potential to site closer to existing infrastructure Use of proven membrane tank technology Lower construction cost of 20-50% Faster construction by around 10.

Summary of future products Benefits Best solution –

All aspects of the plant including gas pre-treatment, liquefaction, storage, utilities, construction techniques etc. optimized and integrated.

Numerous industry experts (consultants, process licensors, equipment suppliers, contractors, operators etc.) engaged to accomplish the best techno-economic solution, Ability to operate at approx.....

Liquefaction system - single mixed refrigerant composition, flow rate and pressures optimized to match cooling curve and best fit standard available equipment.

Modern high efficiency gas turbines (compressors) and LNG plant utilized for utility power Simple process – less equipment items required per train compared to alternative processes, resulting in low capital and low operating/maintenance costs

High train availability – parallel compressors used compared to compressors in series for alternative processes

Fast start-up time – only 24 hours compared to up to 72 hours for alternative processes Modular construction technique - minimizes site construction/commissioning work, improves quality and reduces costs

LNG storage tanks – membrane tanks technique to minimize construction time (critical path) and reduce costs.

CURRENTLY WE ARE DEALING IN FOLLOWING SIZES OF CNG CYLINDERS:

S.No.	DIA	WLC (LTR)	APPLICATION FOR USE
1	267	75 / 80 / 90	FOR CNG ONLY
2	316	50 / 55 / 60 / 65 / 70	FOR CNG ONLY
3	356	60 / 65 / 70 / 75 / 80 / 90 / 100 / 135 / 150	FOR CNG ONLY
4	279	75 / 80 / 90	FOR CNG ONLY
5	325	50 / 55 / 60 / 65 / 70	FOR CNG ONLY
6	406	90 / 100 / 135 / 150	FOR CNG ONLY
7	232	47	FOR INDUSTRIAL GAS ONLY

CNG product series: Large capacity steel seamless gas cylinder, Long tube trailer, tube skid cotainer, gas cylinders storage, pressure regulating installation, portable skid-mounted CNG filling station etc.

Vehicles Product: all kinds of pressure tankers, dangerous chemical vehicle for transport use, etc.

The company provudes sincerely the overall scheme design and installation of LNC filling station, CNG filling station and gas vaporization station,as well as clean energy, storage, transport and installing service for industrial and civil usage.

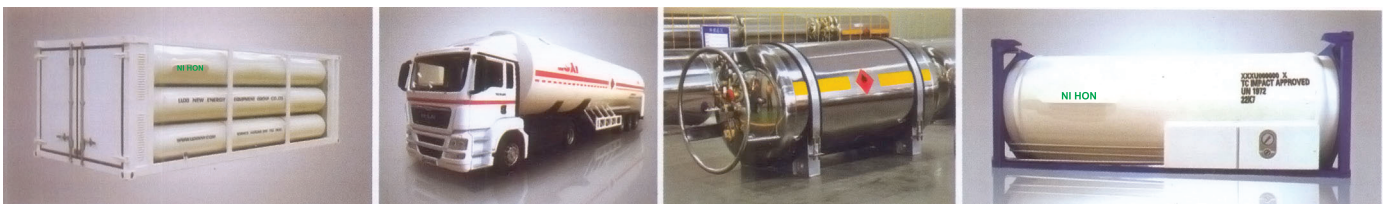
The sales volume of **JIOLAT GROUP** is increasing year by year thanks for its excellent quality, professional technical service. The products have ben exported to different countries and districts such as Russia, South East Asia, South America, South Africa and Middle East etc.

JIOLAT GROUP takes the enviroment protection as her responsibility, orientated by developing, manufacturing and installing tthe green and clean new energy equipment, commitment to build the JIOLAT GROUP into clean energy equipment corporation with top technology, top equipment and excellent quality.



Certificates

1. Environmental Management System Certificate
2. Certificate of Management System for Energy
3. Occupational Health and Safety Management System Certificate
4. Quality Management System Certificate
5. Manufacturer License of Special Equipment
6. ABS Certificate of Design Assessment
7. ASME The American Society of Mechanical Engineering (ASME)
8. The National Board of Boiler & Pressure Vessel Inspectors
9. (CSC) Convention for Safe Containers Certificate (CSC)
10. ISO PED, ADR, MEGC Series standard certification
11. GOST/Russia GOST
12. (TPED) Transportable Pressure Equipment Directive (TPED)
13. Design License of Special Equipment
14. (DOT) Department of Transportation (DOT)



Workshop





For high pressure natural gas storage and transport

Characteristics

1. The ends are hot formed by integrated spinning
2. Used individually or in combination
3. The water capacity ranging from 150L ~ 3000L
4. $-50^{\circ}\text{C} \sim +60^{\circ}\text{C}$

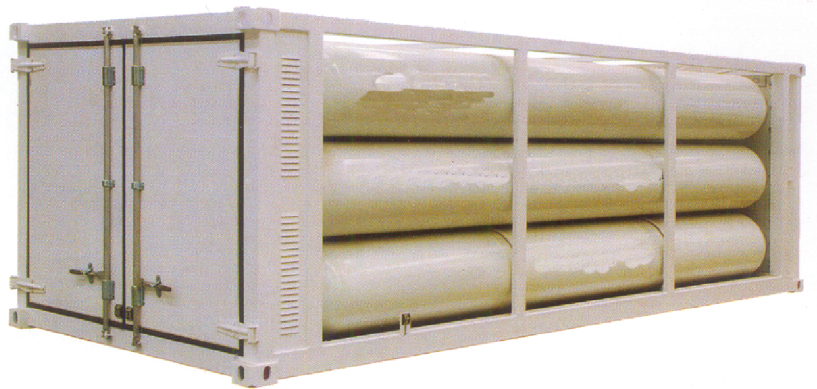
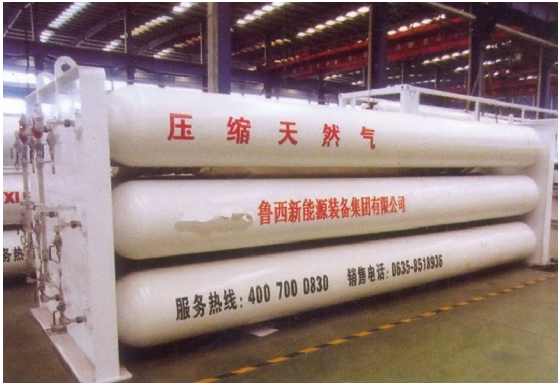
Varied ambient temperature: normally ranging from $-50^{\circ}\text{C} \sim +65^{\circ}\text{C}$

5. Under quenching and tempering heat treatment
6. Service medium CNG, H₂, N₂, He

Service medium: compressed gas such as CNG, H₂, N₂ ETC.



Gas Cylinder Storage



Application

1. (CNG) Storage CNG and other medium
2. As a buffer tank to reduce the impact come from compressor stroke
3. Reduce the starting-on frequency of compressor

Characteristics

1. Limited land area requirement, and save more space
2. Mobile skid, easy for moving
3. Convenient for inspection, with longer service life
4. Divided into different pressure in gas cylinder, to enhance the gas filling efficiency



Application

For CNG transport and temporary storage

Characteristics

1. Frame structure integrated constructed, chassis dismantlable
2. Gas cylinders can be assembled freely and can be assembled as per customer's requirement
3. 20ft and 40ft container is convenient for marine shipping, road transport and enter limited space more freely

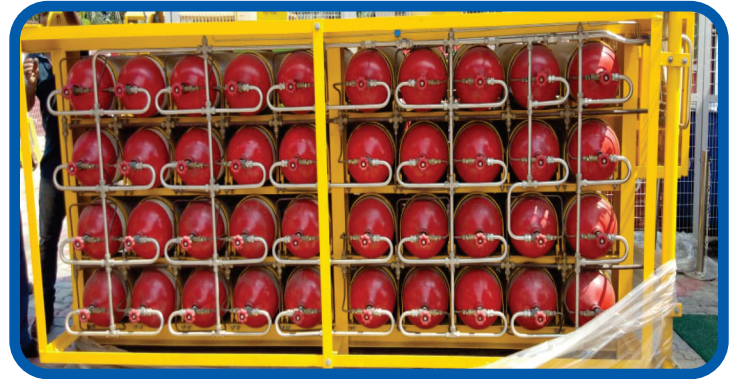


CNG CASCADE

4500 LITER



3000 LITER



2250 LITER

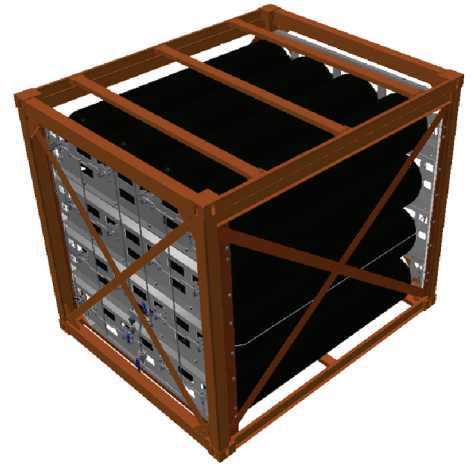
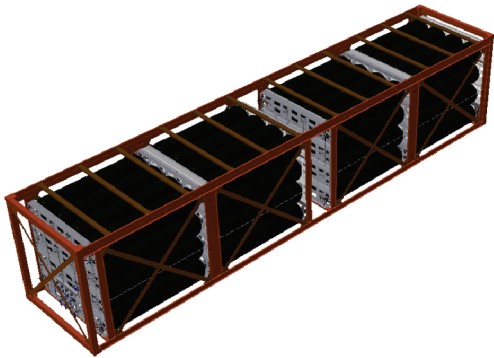


TYPE 3 CNG CASCADE ALLUMINIUM

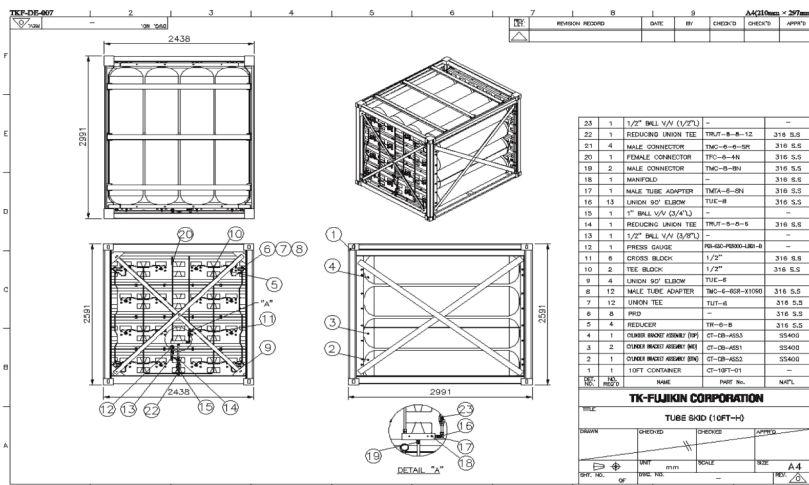




TYPE 4 CNG CASCADE

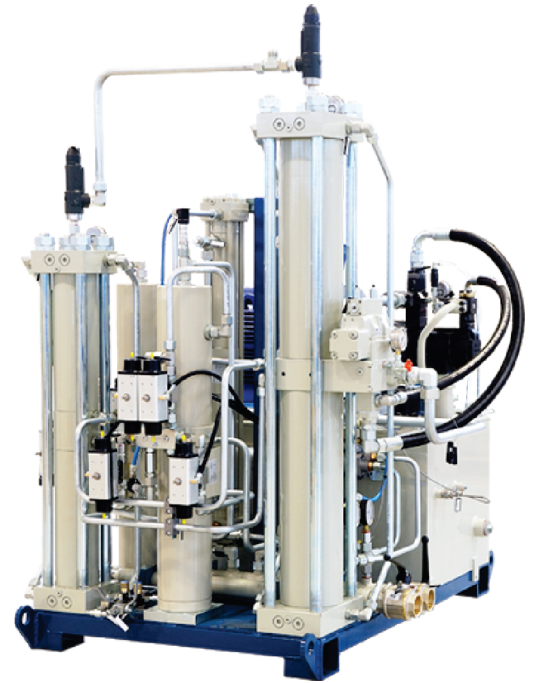


18000 LITER | 9000 LITER | 4500 LITER



OUTSIDE VIEWS OF DDE 13.11 MODEL Serial Number 819

Item	Discription	Qty	Designation
1	Gas intel pressure switch		B2TC48SS Barksdale
2	Oil thermostat		RT 10I Danfoss
3	Gas delivery pressure switch		B2TC48SS Barksdale
4	Control panel ex proof box		Cortein CCFE4B
5	Oil heat exchanger		Fil 0524 4V 0202059
6	Inversion spool valve		4D06 3x030303 30 A1 Denison
7	Inversion solenoid valve		DHA 0631/2/GK 21 Atos
8	Flow switch		FLU 25/ST
9	DDE 13.11 cylinder		IDR
10	2nd stage gas heat exchanger		Bem 0430 s/n 0202053
11	Gas filter		Fbo AP 362.02 elem.K030288
12	Gas safety relief valve 275 bar		Technical s/n 93449
13	Transducer ex proof box		Cortem CCFE2
14	Oil tank		IDR
15	Ist stage gas heat exchanger		Bem 0430 s/n 0106229
16	Gas delivery pressure gauge		Ø 63 0/400 bar G ¼
17	Oil pressure gauge		Ø 63 0/250 bar G ¼
18	Gas inlet pressure gauge		Ø 63 0/400 bar G ¼
19	Downloading solenoid valve		DHA 0631/2/GK 21 Atos
20	Electric motor		Cemp E 180 L4 22 Kw
21	Oil relief valve		R5V08 593 12 A1 Denison



Model	Capacity	FLOW RATE	SPR
M-32	22 KW	250	30 bar
M-30	30 KW	300	30 bar
M-30	28 KW	300	30 bar
M-30	37 KW	350	30 bar

Cryogenic Pump Skid

Application

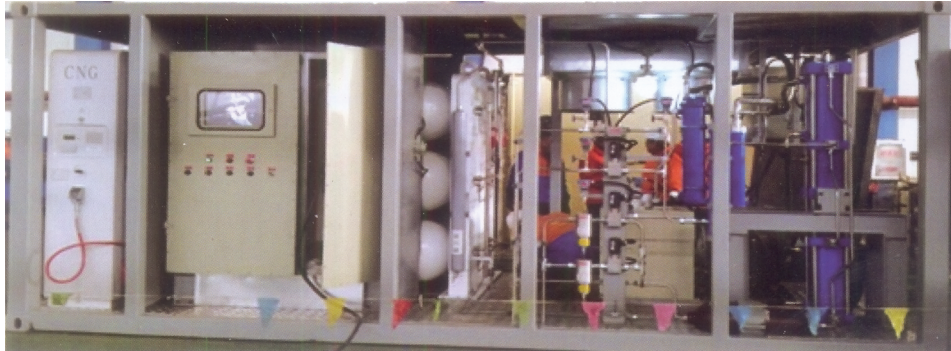
For the fast offloading, pressure adjusting, liquid filling, saturation adjusting and precooling of system

Characteristics

1. All the parts was integuated in a skid by tubing, with less land requirement and can for fast installation
2. Vacuum tubes and valves compact configured to reduce BOG creation
3. Highly automatic for remote control
4. Single and double pumps on skid to enable satisfy different customer requirement



Portable Skid-mounted CNG Filling Station



Application

Filling the NGV or other industrial users as a kind of CNG daughter filling station

Characteristics

1. Low investment, fast for CNG Station construction
2. Double cylinder structure, vertical installation of cylinder block
3. Oil free lubricating on cylinder piston
4. CNG, Zero contamination on CNG during compression



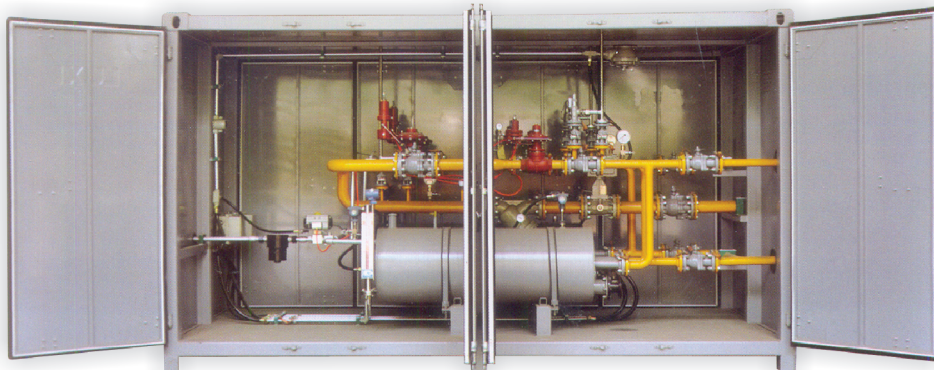
Pressure Regulating Installation

Application

Reduce the high pressure gas into the low pressure one and supply the customer at stable flowrate

Characteristics

1. Heating method is optional
2. Different pressures and flowrate configuration
3. Stable output work pressure



LNG Modular Skid Mounted Gas Filing Station

Application

Provides gas fuel to industries and enterprises such as ceramics, plastics, chemicals, fertilizers, oil refinery, printing and dyeing, shipping and automobile etc

Characteristics

1. With an integrated frame structure, it is easy to move and assemble
2. Integrated solution to minimize the cost
3. Easy and fast to installation



Gas Cylinders for Automotive Vehicles

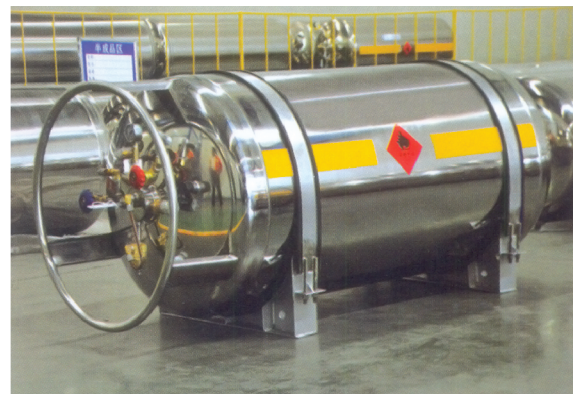


Application

Used as the fuel storage unit for vehicle such as bus and heavy duty truck

Characteristics

1. Double layer protection with safety valve
2. Two stages protection with safety valve
3. All tubing and fitting fitted on end, and protected by a steel ring or cover



Welded Insulated Gas Cylinder

Application

Mainly use as a vessel for storage and transport of liquefied nitrogen, liquefied oxygen, liquefied argon, liquefied carbon dioxide and liquefied natural gas etc, to meet the different requirement such as industrial users, boiler, restaurant and canteen etc

Characteristics

1. With self booster system and supply gas continuously
2. Multi-layer insulating material, highly vacuumed, with excellent insulation performance
3. Excellent gas usage rate, liquefied gas supply avoid the gas waste
4. Low storage pressure of cylinder with multi stages protective device, realize better effect
5. Reasonable frame structure design, avoid the external effect during transport



LNG/LCNG Gas Station Technical Process



LCNG Skid Mounted Station Pump Package



Road Tankers for Cryogenic Liquid

Application

It is used for cryogenic liquid transport and short-time storage

Characteristics

1. More loading capacity, with optional self booster system to reduce the energy consumption
2. Easy and convenient to operate and maintenance
3. With sound insulating performance



Complete Equipment of Gas Station

Scope

LNG Filling Station consists of cryogenic storage tank, pumps skid (including) submerged pump, vaporizer as well as connecting pipeline) gas dispenser and relevant accessory equipment

Characteristics

1. With unique design of storage tank, the static evaporation rate is is low
2. Reasonable procedure, comprehensive functions, considerate layout
3. Pre-assembled, maximized module, easier to install with less workload and faster put into

Service



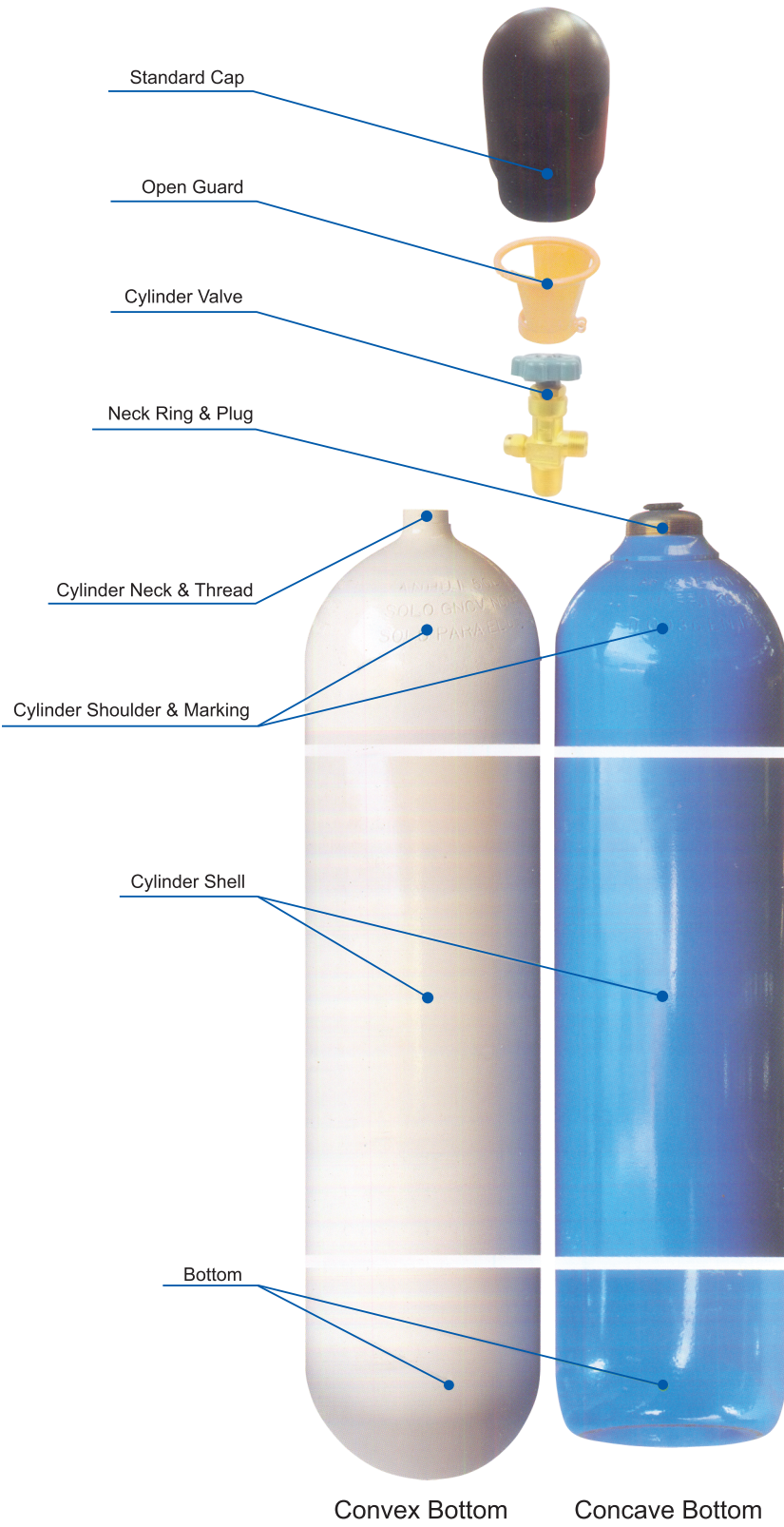
Whole Construction Solution for Station

1. Have had built more than 80 CNG & LNG stations (including 86 whole installation for station)
2. 56 LNG Station
3. More than 100 LNG gasification station
4. Cooperates with CNOOC and other large domestic enterprises to broadem business opportunites
5. Undertake EPC project
6. Intallation business includes LNG gas filling stations, 30 CNG filling stations, L-CNG filling Stations, LNG gasification station, boiler renovation and other fields





ACCESSORIES



ACCESSORIES FOR THE HIGH PRESSURE STEEL CYLINDER

STEEL PROTECTION CAPS (STANDARD CAP AND OPEN GUARD) certified to EN ISO111 17 standard, produced from raw steel with zinc plated, and painted in different color.

CYLINDER VALVES for a various of compressed or liquefied gases, can be supplied and customized in accordance with domestic, European and other international regulations and standards.

NECK RINGS are manufactured by hot forging from steel billets according to CPTÉ's own design and parameters, produced from raw steel with zinc plated.

We have equipped with a professional valve mounting machine, which makes us can serve our customers with assembling the cylinders with all required above accessories.

Seamless Steel Gas Clinder

Cylinder Model and Standard	Normal Working Pressure(Bar)	Hyd.test Pressure (Bar)	Material	Outer Diameter (mm)	Water Capacity (L)	Weight (kg)	Gas Capacity (m ³)				
WZA267-67.5L(GB5099)	150	250	37Mn	267	67.5	72.5	10.13				
WZA267-70L(GB5099)					70	75.0	10.50				
WZA267-80L(GB5099)					80	84.0	12.00				
WZA279-67.5L(GB5099)				279	67.5	68.5	10.13				
WZA279-70L(GB5099)					70	70.5	10.50				
WZA279-80L(GB5099)					80	80.0	12.00				
ISO232-30L20(ISO9809-1)	200	300	34CrMo4	232	30	34.0	6.00				
ISO232-35L-20(ISO9809-1)					35	41.0	7.00				
ISO232-40L-20(ISO9809-1)					40	45.5	8.00				
ISO232-45L-20(ISO9809-1)					45	50.0	9.00				
ISO232-47L-20(ISO9809-1)					47	52.0	9.40				
ISO232-50L-20(ISO9809-1)					50	54.0	10.00				
ISO232-60L-20(ISO9809-1)					60	61.5	12.00				
ISO232-70L-20(ISO9809-1)					70	69.0	14.00				
EN232-30L-20(EN ISO9809-1)					200	300	34CrMo4	232	30	34.0	6.00
EN232-35L-20(EN ISO9809-1)									35	41.0	7.00
EN232-40L-20(EN ISO9809-1)	40	45.5	8.00								
EN232-45L-20(EN ISO9809-1)	45	50.0	9.00								
EN232-47L-20(EN ISO9809-1)	47	52.0	9.40								
EN232-50L-20(EN ISO9809-1)	50	54.0	10.00								
EN232-60L-20(EN ISO9809-1)	60	61.5	12.00								
EN232-70L-20(EN ISO9809-1)	70	69.0	14.00								
EN232-67.5L-20(EN ISO9809-1)	200	300	34CrMo4	267					67.5	77.5	13.50
EN232-68L-20(EN ISO9809-1)									70	78.5	14.00
EN232-80L-20(EN ISO9809-1)					80	84.0	16.00				
EN232-30L-23(EN ISO9809-1)	230	345	34CrMo4	232	30	34.5	6.00				
EN232-35L-23(EN ISO9809-1)					35	41.5	7.00				
EN232-40L-23(EN ISO9809-1)					40	46.0	8.00				
EN232-45L-23(EN ISO9809-1)					45	50.5	9.00				
EN232-47L-23(EN ISO9809-1)					47	52.5	9.40				
EN232-50L-23(EN ISO9809-1)					50	54.5	10.00				
EN232-60L-23(EN ISO9809-1)					60	62.0	12.00				
EN232-70L-23(EN ISO9809-1)					70	79.5	14.00				



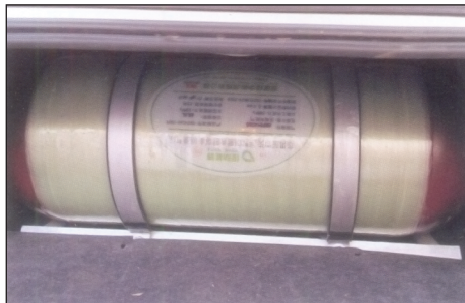
CNG Steel Cylinder for Vehicles(CNG-1)

Cylinder Model and Standard	Normal Working Pressure(Bar)	Hyd.test Pressure(Bar)	Design Wall Thickness (mm)	Material	Bottom Shape	Outer Diameter (mm)	Water Capacity (L)	Length (mm)	Weight (kg)	Gas Capacity (m ³)
CNG1-279-V-20 (GB17258)	200	300	7.8	30CrMo	Convex	279	50	1050	54.0	10.00
							60	1210	62.0	12.00
							70	1400	70.0	14.00
							80	1590	78.5	16.00
							90	1835	105.0	18.00
CNP20-V-232A (ISO11439)	200	300					20	685	25.5	4.00
							25.5	830	31.0	5.00
							28	880	32.5	5.60
							30	925	34.0	6.40
							34	1030	37.0	6.80
							35	1060	38.5	7.00
							40	1235	41.0	8.00
							47	1420	48.0	9.40
							50	1450	54.0	10.00
							40	865	44.0	8.00
CNP20-V-279A (ISO11439)	200	300	6.4	34CrMo4	Convex	279	50	1035	54.0	10.00
							60	1225	62.0	12.00
							70	1400	70.0	14.00
							80	1590	78.5	16.00
							50	810	56.0	10.00
CNP20-V-325A (ISO11439)	200	300	7.2	34CrMo4	Convex	325	52	860	57.0	10.40
							55	900	61.0	11.00
							60	960	65.0	12.00
							62	995	65.0	12.40
							65	1000	66.0	13.00
							68	1070	72.0	13.60
							77	1190	79.0	15.40
							90	1360	89.5	18.00
							95	1430	93.5	19.00
							100	1500	97.5	20.00
CNP20-V-356A (ISO11439)	200	300	8.2	34CrMo4	Convex	356	50	695	56.0	10.00
							52	720	58.0	10.40
							55	750	60.0	11.00



Steel Liner Hoop-wrapped Composite Cylinder for Vehicles(CNG-2)

Cylinder Model and Standard	Normal Working Pressure(Bar)	Hyd.test Pressure(Bar)	Design Wall Thickness (mm)	Material	Bottom Shape	Outer Diameter (mm)	Water Capacity (L)	Length (mm)	Weight (kg)	Gas Capacity (m³)
CNG2-G-325-V-20B (GB24160:2009)	200	300	5.0	30CrMo4	Convex	325	50	800	42.0	10.0
							55	860	43.0	11.0
							60	920	46.5	12.0
							65	980	49.0	13.0
							70	1040	52.5	14.0
							75	1110	56.0	15.0
							80	1170	60.0	16.0
							90	1310	67.0	18.0
							95	1370	70.5	19.0
							100	1430	74.0	20.0
CNG2-G-356-V-20B (GB24160:2009)	200	300	5.5	30CrMo	Convex	325	50	765	48.0	10.0
							60	815	51.5	12.0
							65	865	52.5	13.0
							70	915	55.0	14.0
							75	965	57.5	15.0
							80	1015	60.0	16.0
							85	1070	62.0	17.0
							90	1125	64.5	18.0
							100	1235	72.0	20.0
							110	1345	76.0	22.0
							120	1445	80.0	24.0
							130	1560	84.0	26.0
							140	1670	88.0	28.0
145	1725	90.0	29.0							
150	1780	92.0	30.0							



Why LNG as Transportation Fuel

Energy Density - LNG v/s CNG v/s Diesel

Energy Density

- Since space occupied by fuel is a very important factor in moving vehicles, we need to understand the term energy density. Energy density is the energy contained in a fuel per unit volume occupied by that fuel.
- LNG achieved a higher reduction in volume than CNG, because the volumetric energy density of LNG is 2.4 times greater than that of CNG.
- Diesel on the hand, achieves slightly higher reduction when compared to LNG.

Diesel



LNG

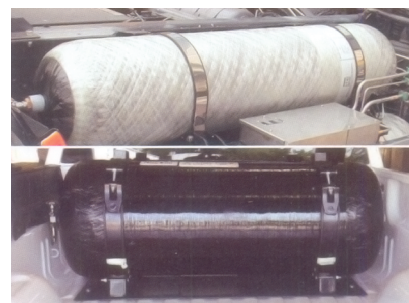


CNG



Full-wrapped Composite Cylinder for Vehicles

Cylinder Model and Standard	Normal Working Pressure(Bar)	Hyd.test Pressure(Bar)	Design Wall Thickness (mm)	Material	Bottom Shape	Outer Diameter (mm)	Water Capacity (L)	Length (mm)	Weight (kg)	Gas Capacity (m ³)
CNG-4-425-20B	ISO11439:2013	20	30	10	HDPE	120	125	1250	45.00	
CNG-4-452-20B	ISO11439:2013	20	30	10	HDPE	100				
CNG-4-452-20B	ISO11439:2013	20	30	10	HDPE	130	452	1180	46.00	
CNG-4-452-20B	ISO11439:2013	20	30	10	HDPE	145				
CNG-4-452-20B	ISO11439:2013	20	30	10	HDPE	225	452	1900	64.00	
CNG-4-452-20B	ISO11439:2013	20	30	10	HDPE	250				
CNG-4-460-20B	ISO11439:2013	20	30	10	HDPE	140	460	1280	50.00	
CNG-4-460-20B	ISO11439:2013	20	30	10	HDPE	150				
CNG-4-460-20B	ISO11439:2013	20	30	10	HDPE	230	460	1880	65.00	
CNG-4-460-20B	ISO11439:2013	20	30	10	HDPE	235				
CNG-4-454-25B	ISO11439:2013	25	37.5	10	HDPE	100	454	950	41.00	
CNG-4-454-25B	ISO11439:2013	25	37.5	10	HDPE	130				
CNG-4-454-25B	ISO11439:2013	25	37.5	10	HDPE	145	454	1290	53.00	
CNG-4-454-25B	ISO11439:2013	25	37.5	10	HDPE	225				
CNG-4-454-25B	ISO11439:2013	25	37.5	10	HDPE	250	454	2090	75.00	
CNG-4-462-25B	ISO11439:2013	25	37.5	10	HDPE	140				
CNG-4-462-25B	ISO11439:2013	25	37.5	10	HDPE	150	462	1340	54.50	
CNG-4-462-25B	ISO11439:2013	25	37.5	10	HDPE	230				
CNG-4-462-25B	ISO11439:2013	25	37.5	10	HDPE	235	462	1910	74.50	



Road Transport in China/Europe/USA

- China is paving the way for LNG in road transport

Year	2012	2013	2014	2017
Number of LNG trucks	70,000	100,000	250,000	300,000
Number of LNG fueling stations	n.a.	n.a.	2,122	3,100



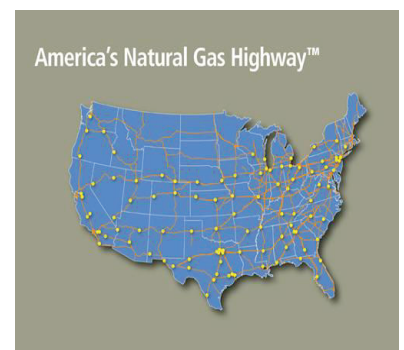
Europe

- In Europe Blue Corridor Development to run LNG powered trucks is in progress. (about 100 LNG stations)



Germany

- There are approximately 173 LNG stations.
- There are large number of LNG fuelled trucks.





JIOLAT

Group

LNG Cryogenic Storage Tank



Application

Used for LNG temporary storage

Characteristics

1. Latest flexible computing technology and mature construction procedure
2. Unique insulating support design to minimize the heat transfer and reduce the daily evaporation
3. Compact valve layout, easy to operate and maintenance with-userfriendly design
4. All and fittings which connecting with vacuum was adopted world famous brand so as to ensure the vacuum service life and reliabilities



T75 Tank Container

Application

Used for storage and transport of cryogenic liquid by road, rail and sea

Characteristics

1. More reliable and safer for transporting
2. Compatible and transferable directly between road, rail and sea, convenient to operate and easy to load, shorten the loading time in stations and docks greatly
3. Can be used both as transport facility and storage vessel
4. The overall dimension of tank container and frame structure form fully conform to the international and domestic standard requirements



Growth in M & HCV Trucks and Buses

S N	F.Y.	M & HCV Trucks (Addition Every Year)	Buses (Addition Every Year)
1.	2014-15	1,95,918	81,653
2.	2015-16	2,58,488	92,845
3.	2016-17	2,55,267	98,126
4.	2017-18	304,664	84,658
5.	2018-19(2M)	52,223	16,522
Yearly Average		2,53,584	89,320

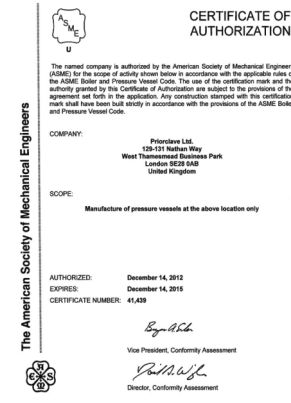
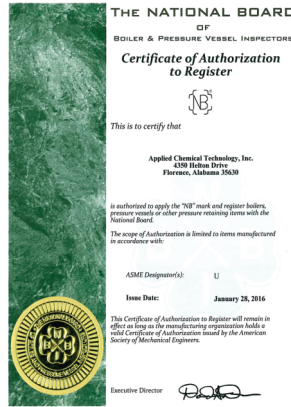
Data Source- ICRA Report

Benefits of LNG

- Better combustion.
- Environmentally friendly clean fuel.
- LNG supply by trucks already existing practice.
- Attractive Savings
- Site Gas storage possible.
- Better product quality.
- Better safety features due to dispersion properties of Methane



- **M/s Indian Oil Corporation Ltd.**
- **M/s Bharat Petroleum Corporation Ltd.**
- **M/s Hindustan Petroleum Corporation Ltd.**
- **M/s Indian Oil Adani Pvt. Ltd.**
- **M/s Jaypee Group, Noida, UP**
- **M/s Adani Gas. Ltd.**
- **M/s Punjab Genco Ltd.**
- **M/s Andhra Pradesh State Road Transport Corporation, AP**
- **M/s Delhi Transport Corporation, New Delhi**
- **M/s Haryana Roadways, Sonipat**
- **M/s Indraprastha Gas Limited, New Delhi**
- **M/S Adani Gas Limited, Faridabad**
- **M/s Bhagyanagar Gas Limited, Hyderabad**
- **M/s Haryana City Gas Distribution Ltd. Haryana**
- **M/s Central UP Gas Limited, Kanpur U.P.**
- **M/s Sity Energy Limited, Muradabad, U.P.**
- **M/s Central Institute of Mining and Fuel Research, Jharkhand**
- **M/s International Centre for Automotive Technology, Manesar**
- **M/s Harvest Gold Industries Pvt. Ltd., Rajasthan**
- **M/s Taj Sats Air Catering Ltd., Delhi**
- **M/s BSES Rajdhani Power Pvt. Ltd., Delhi**
- **M/s BSES Yamuna Power Pvt. Ltd., Delhi**
- **M/s Agarwal Packers & Movers Ltd., Delhi**
- **M/s Punja Sahib Tours & Travels, Delhi**
- **M/s Bonn Group of Industries., Punjab**
- **M/s Hyundai Motors India Ltd.**
- **M/s Maruti Suzuki India Ltd.**
- **M/s Advantek Fuel Systems Pvt. Ltd.**
- **M/s TATA Motors Ltd.**
- **M/s SML ISUZU Ltd.**
- **M/s Ashok Leyland Ltd.**
- **M/s Mahendra and Mahendra Ltd.**
- **M/s Krishna Maruti Ltd.**





ISO 9001:2015 Company

E-mail : contact@nihoncylinders.com, Web : nihoncylinders.com
Head off: HR-18A, Gali No.10, Industrial Area(Near Police Station)
Anand Parbat, Delhi-110005
Ph. No.+91-01128764977, 01128764978, 011-28764979